



Trolldtekt® take back
scheme for building site

A joint contribution to the circular economy

You can return clean offcuts and waste from Troldekt cement-bonded wood wool panels. We'll make sure they are included as a resource in new cycles.

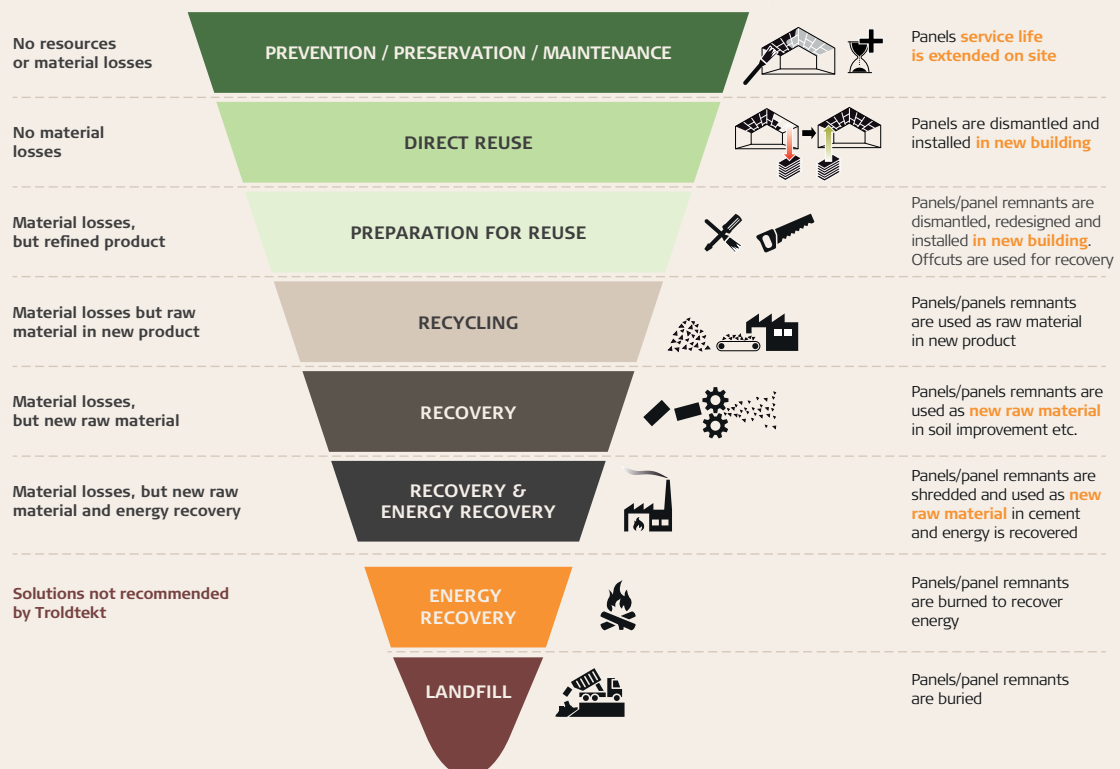
Troldekt acoustic panels are Cradle to Cradle-Certified® at Gold level. Certification documents that the panels are free of harmful ingredients. They can therefore safely be returned to the biological cycle – or be used as a resource in the manufacture of new products.

When you return clean cement-bonded wood wool cuttings and waste from your building site to Troldekt, we make sure they are reused. That's how we can jointly contribute to a circular economy.



Troldekt resource hierarchy

Troldekt works with return models that can give acoustic panels one or even more extra life cycles. In addition to recovering waste and offcuts from building sites, our ambition is to reuse, recycle and upcycle as many panels as possible from demolition.



The take back scheme in practice

How to return Troldekt offcuts and waste from building sites

- 1 You will enter into a take back agreement. This must include the specific order/invoice number from the purchase of the Troldekt panels. If you are a contractor, you will enter into the agreement with your timber merchant. If you are a timber merchant, you enter into an agreement with Troldekt.
- 2 At the agreed time, you return clean offcuts and waste from Troldekt cement-bonded wood wool panels to Troldekt's partner Sønderup Montage ApS, Filskowvej 21, DK-7330 Brande.
- 3 You receive documentation of the returned quantity. For example, you can use the documentation from Troldekt in connection with building certification schemes such as DGNB.

Read the take back instructions online

Please note that the requirements in Troldekt's take back instructions must be met for you to return offcuts and waste.

You pay the cost of returns yourself, as well as a cost per tonne of returned material, which is close to the typical cost of disposal for incineration.

➤ GBP 85 per tonne of pure cement-bonded wood wool

Find take back instructions at ➤ www.troldekt.co.uk



The Sønderup Montage facility.

This is where we create new value for offcuts and waste

Returned Troldekt offcuts and waste are crushed and used, for example, as:

- livestock bedding
- stability-enhancing material for animals that graze outdoors all year round
- weed-control ground cover in forestry and plantations.

The aforementioned solutions in the biological cycle have all been approved by the Environment and Construction Administration in Ikast-Brande Municipality.

When will it pay off?

In the CO₂ accounting, it can pay off to ship offcuts and waste for recovery in Brande. This even applies to situations in which the building site is as much as 1,000

kilometres away. You can see the CO₂ emissions from reuse at Sønderup Montage and transport to Brande as an alternative to local incineration or landfill below.

CO ₂ e-emission per kg Troldekt	50 km	100 km	500 km	1,000 km
Recovery + transport to Brande, Denmark	0.27	0.28	0.35	0.45
Incineration + transport to local plant	0.50	0.50	0.50	0.50
Landfill + transport to local site	0.82	0.82	0.82	0.82

The table is based on calculations made by Stefan E. Danielsson, an independent verifier associated with EPD Denmark.



This document reflects Troldekt's knowledge of certifications, standards, and products at the time of publication.

No rights can be derived from this document. Changes, typesetting and printing errors reserved.

The most recent version can be found online by scanning the QR code.