



How can we

CHANGE
INNOVATE
REINVENT it?
RETHINK
REUSE
ADAPT

by
CHANGING
its

geometry



new design possibilities

joints



new installing process

new objects

ingredients

+ colour pigments



new colours

+ micro objects



new proprieties and behaviour

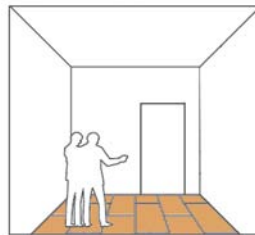
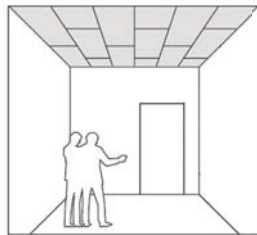
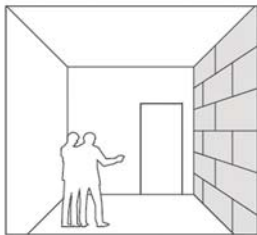
+ metal dust



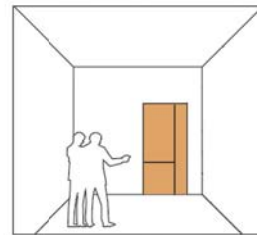
new proprieties and new uses

*Troldekt existing products
or winning ideas at Troldekt
award

and we do that to use it for walls and ceilings



but why not for the floor too?



or maybe for that door?

we think that we can find
more ways to use Troldekt
products if we change the
proportions of the original

Natural raw materials
INGREDIENTS



wood wool



cement



water



air





we believe that the actual uses of the Troldekt products are limited by its required and high accoustic performance given by the unique *density* and materiality of the pannels



AIR
we think that by adjusting the air proportion in the actual panels, we can get a new wide range of possible objects



the actual density of the products allows objects with a thickness ranging from 20 to 50mm

BACK THEN



in 1927, L. Hammerich was offering a wide range of construction materials and products for your home

NOW

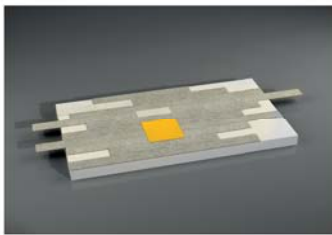
we estimate that the actual Troldekt panels have a proportion of the *air* less than 5%

THEN

a new proportion of the air will get another density of the product so another accoustic performance but *a new range of products* thanks to the different thicknesses and weights available

no air
immobile

less air
thin and hard
the **FLOOR**



floor tiles with wide unlimited possibilites

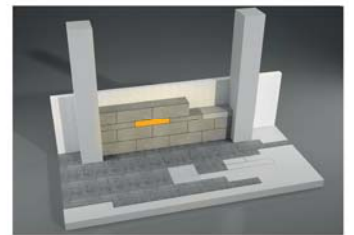
more air
medium thickness
the **DOOR**



door with aluminium details

much more air
large
the **BRICK**

almost only air
floating



brick with metal or wood joints

... and now you can have your entire home built with Troldekt products

