

# Troldtekt® baffles

## Technical data

### TROLDTEKT® BAFFLES

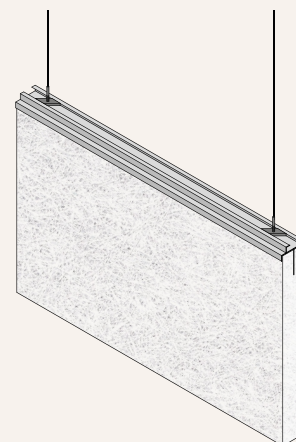
Troldtekt baffles are an effective and flexible acoustics solution that can supplement existing sound-absorbing surfaces on walls and ceilings while regulating the acoustics in rooms where it is not possible to install a suspended acoustic ceiling.

Using Troldtekt acoustic baffles, the acoustics can be adapted according to need, as the baffles are suspended individually from the ceiling structure. This allows a great deal of freedom with regard to the interior design and architectural look while achieving an impressive acoustic effect, because the suspended Troldtekt baffles absorb sound on both sides of the

panels. The design is simple and elegant, with a visible aluminium profile at the top to which one attaches the thin steel wires.

Troldtekt baffles are available in natural wood/natural grey or painted in our standard colours. Custom-painted baffles can also be supplied, painted in an RAL or NCS colour of your choice. All Troldtekt cement-bonded wood wool products in natural wood/natural grey and standard colours are Cradle to Cradle-certified at Gold level.

The baffles are available with Troldtekt acoustic panels in fire class B-s1,d0 or A2-s1,d0.



### PRODUCT STANDARDS, LABELLING AND CERTIFICATION

#### CE marking

Within the EU, all building materials are legally required to be CE-marked. The CE mark indicates that the building material can be legally sold and that it complies with the product standard to which the mark refers. Troldtekt products are CE-marked, and in addition to the marking we state:

#### Name of producer:

Troldtekt A/S

#### Certifications

0615-CPR-222958G

0615-CPR-80474G

#### Product standard number:

EN 13964

#### Declaration:

See product data on page 2

#### Other approvals

**Cradle to Cradle:** Troldtekt is Cradle to Cradle-certified at Gold level. Troldtekt acoustic panels are documented as being free of harmful substances and can therefore safely be returned to the biological cycle. Additionally, waste from the production of Troldtekt acoustic panels is returned to the technical cycle and used as a resource in new cement at Aalborg Portland.



**Indoor climate labelling:** Troldtekt is indoor climate-labelled in the best degassing and particle release categories.



**M1 classification:** Troldtekt is M1-classified by the Finnish Building Information Foundation RTS sr. This is the best category, and means that the panels have an extremely low emissions level for volatile organic compounds (VOC).



**Blue Angel:** Troldtekt is eco-labelled under the German Blue Angel eco-labelling scheme, which guarantees that the product has a low impact on the environment and the climate and meets high standards for health protection.



**PEFC and FSC:** Troldtekt is PEFC (PEFC/09-31-030) and FSC® (FSC®C115450)-certified, which means that all our products are manufactured using wood from responsible forestry operations. Customers can choose whether they want their Troldtekt acoustic panels to be FSC or PEFC-certified.



**Light reflection:** Light reflection for different types of Troldtekt panels (measured by Teknologisk Institut, Denmark) can be found on Troldtekt's webpage. Please scan the QR code.



## OPERATION AND MAINTENANCE

Trolldtekt panels usually require no subsequent care. However, we recommend regular cleaning along with other surfaces – and otherwise as required. The panels are easy to clean using a vacuum cleaner with a brush nozzle. If vacuum-cleaning is not sufficient, the panels can be wiped with a

slightly damp cloth. If you subsequently want to paint the Trolldtekt ceiling, you can use a long-haired paint roller or a hand sprayer. Water-based paint does not reduce the sound-absorbing properties of the panels.

## REUTILISATION

All Trolldtekt baffles can be separated into cement-bonded wood wool and metal parts. Cement-bonded wood wool products can be composted and returned to nature as a soil conditioner.

The cement in Trolldtekt panels has a high lime content, which helps to neutralise the acids produced during composting. The wood in the Trolldtekt panels is organic material, and helps to prevent

the compost from compacting, thereby enhancing oxygenation during the composting process. In this way, carbon and nutrients are recirculated in the biological cycle.

## TOLERANCES

Trolldtekt consists of the natural material wood, and cement extracted from Danish mineral resources. The mix of natural materials – wood wool and cement – inevitably results in slight variations in the panels.

Panel dimensions remain inside the tolerance indicated at 23+/-2°C and 50+/-5% relative humidity. However, inappropriate storage and lack of acclimatisation can affect the dimensions and weight of the

panels. Therefore, it is important to carefully follow the installation, storage and acclimatisation instructions.

## PRODUCT DATA

The table below indicates the product data which we declare in accordance with EN 13964, which is the standard for suspended ceilings.

### Properties:

#### Dimensions

Width (mm)	300/600
Length (mm)	600/1200
Thickness (mm)	40

### Fire

Baffles are made of panels in fire class:  
Reaction to fire in accordance with EN 13501-1

**B-s1,d0**

**A2-s1,d0**

### Weight (kg/m²)

Fine	18.5	
Ultrafine	20.0	23.0

### Standard

Declaration in accordance with EN 13964

### Suspension

Steel wires and cable holder\*

Aluminium fastening blocks and top profile

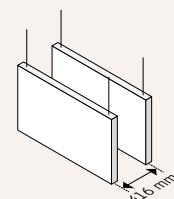
\* Not suitable for use in swimming pools etc.

## ACCREDITED SOUND MEASUREMENTS

**40 x 600 x 1200 mm**  
**Centre distance = 416 mm**

Hz	125	250	500	1000	2000	4000
$\alpha$	0.35	0.35	0.50	0.70	0.85	0.95

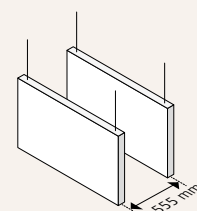
$\alpha_w = 0.55$  - NRC = 0.60 - Absorption class D



**40 x 600 x 1200 mm**  
**Centre distance = 555 mm**

Hz	125	250	500	1000	2000	4000
$\alpha$	0.30	0.30	0.45	0.65	0.75	0.85

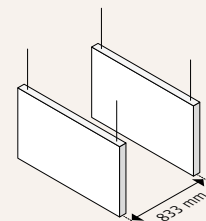
$\alpha_w = 0.50$  - NRC = 0.55 - Absorption class D



**40 x 600 x 1200 mm**  
**Centre distance = 833 mm**

Hz	125	250	500	1000	2000	4000
$\alpha$	0.35	0.35	0.35	0.55	0.65	0.75

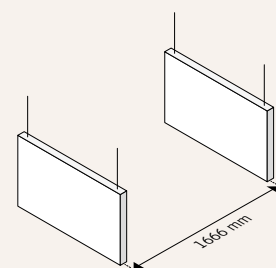
$\alpha_w = 0.45$  - NRC = 0.45 - Absorption class D



**40 x 600 x 1200 mm**  
**Centre distance = 1666 mm**

Hz	125	250	500	1000	2000	4000
$\alpha$	0.25	0.20	0.25	0.35	0.40	0.50

$\alpha_w = 0.35$  - NRC = 0.30 - Absorption class D



This document reflects Troldekt's knowledge of certifications, standards, and products at the time of publication.  
No rights can be derived from this document.  
Changes, typesetting and printing errors reserved.

The most recent version can be found online by scanning the QR code.

MARCH 2025 EN V01

Troldekt A/S  
Sletvej 2A  
DK-8310 Tranbjerg J  
Tel. +45 8747 8100  
info@troldekt.dk  
www.troldekt.com