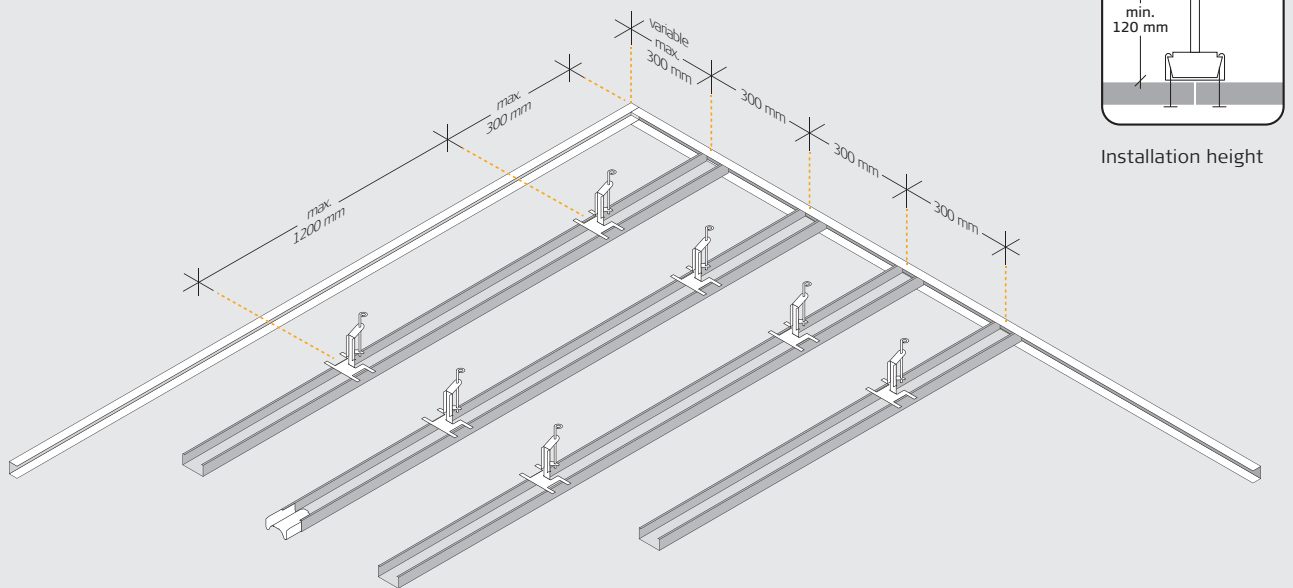


INSTALLATION INSTRUCTIONS

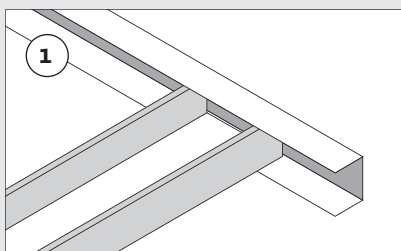
C60 profiles suspended with quick-fit suspension brackets for 15 mm panels

These instructions apply to installation of C60 profiles suspended with quick-fit suspension brackets for 15 mm panels.

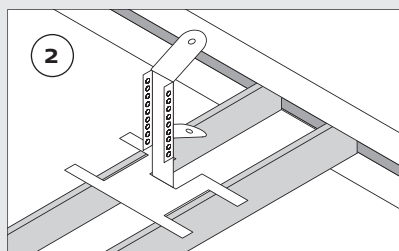
INSTALLATION OF C60 PROFILES



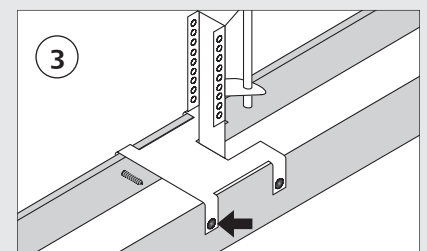
STRUCTURAL SOFFIT



1: Mark the horizontal ceiling at the required height on all adjoining walls. Mark the lower side of the U-profile and fix it to the wall using 6 mm dowels in predrilled holes. Determine and mark the anchor points for the C60 profiles. Always install the first quick-fit suspension bracket max. 300 mm from the wall. Distribute the remaining quick-fit suspension brackets with a max. spacing of 1200 mm. Assemble ring hook and quick-fit suspension bracket to the desired length and fasten securely to the construction above before further installation. Then bend the ring hook into vertical position.

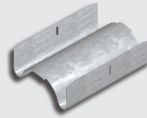


2: Hold a C60 profile with the opening facing upwards and fix a quick-fit suspension bracket at every hanger point. Assemble the C60 profiles longitudinally using C-connectors, and terminate the C60 profiles in the U-profile. If possible, divide the ceiling space to allow for adjustments of min. 300 mm on both sides.



3: The quick-fit suspension bracket may be fixed to the main profile using screws in case of increased loads.

COMPONENTS



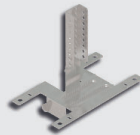
Product name	C60 profile 60×27 mm	C-connector	C-quick-fit suspension bracket	U-profile 28×27 mm
Length (mm)	4000	80	100	3000
Quantity per pack	12 pcs.	100 pcs.	50 pcs.	16 spcs.
Approx. qty. per m ²	1.7 linear m	0.5 pcs.	1.4 pcs.	According to measurement



Product name	Ring hook
Length (mm)	120, 250, 375, 500, 750, 1000
Quantity per pack	100 pcs.
Approx. qty. per m ²	1.4 pcs.

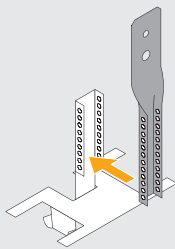
NONIUS

To minimise wind-related pressure/suction impact, install the Troldtekt C60 profile system using fixed quick-hangers – nonius quick-hangers – instead of ring hooks.

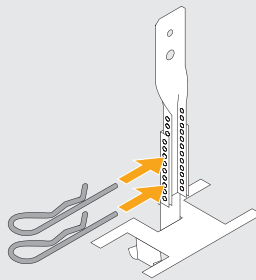


Product name	Nonius quick-fit suspension bracket	Nonius quick-hanger	Nonius split-pin
Length (mm)	100	Variable	-
Quantity per pack	50 pcs.	100 pcs.	100 pcs.
Approx. qty. per m ²	1.4 pcs.	1.4 pcs.	2.8 pcs.

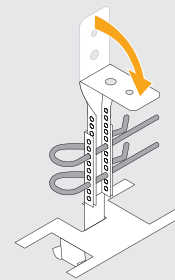
NONIUS, ASSEMBLY INSTRUCTIONS



1: Place the nonius quick-hanger in the quick-fit suspension bracket



2: Secure the quick-hanger with nonius split-pins



3: If necessary, fold the upper part of the quick-hanger