

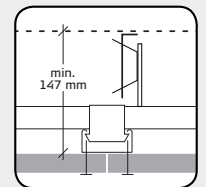
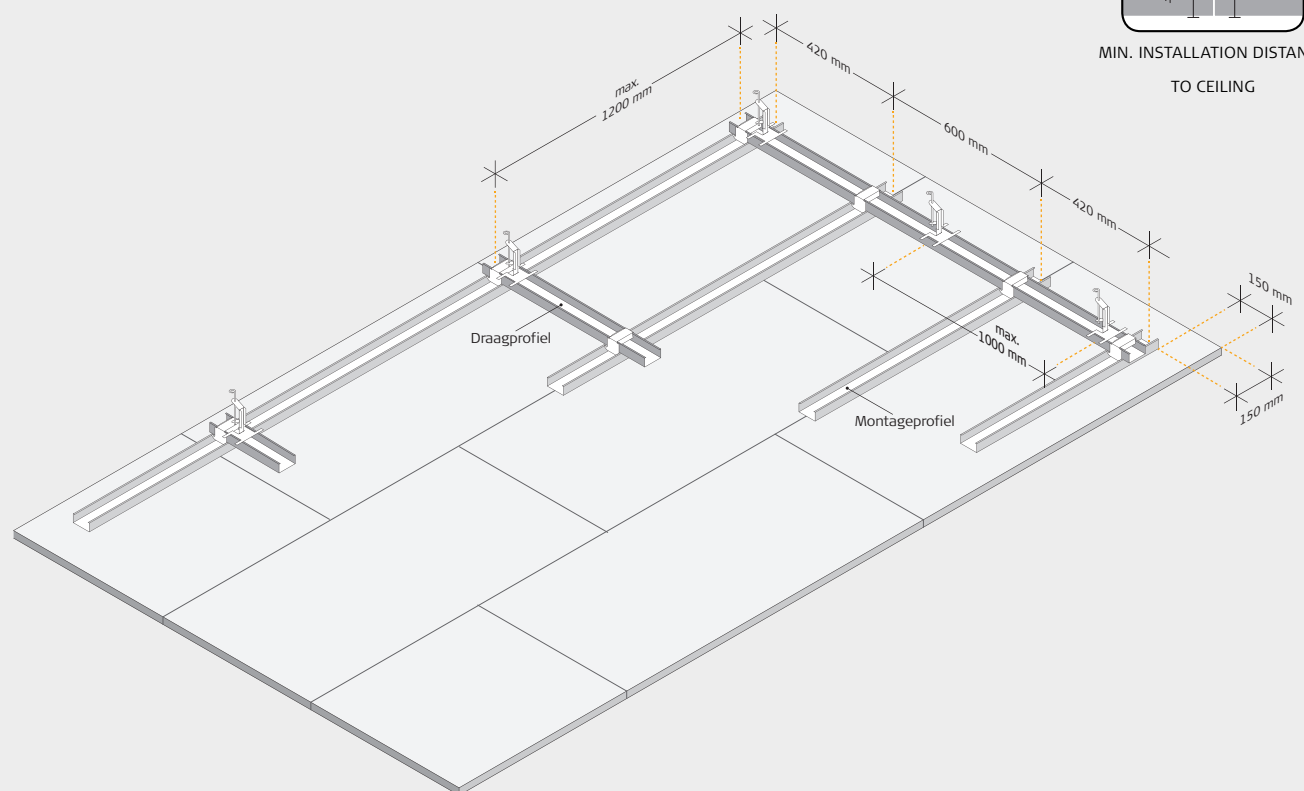
INSTALLATION INSTRUCTIONS

Troldtekt® floating acoustic clouds
Installation on C60 profiles as floating cloud without edging



These instructions describe the installation of floating clouds without edging on C60 profiles.
Download installation instructions for all Troldtekt panel types at www.troldtekt.com.

INSTALLATION OF FLOATING CLOUDS ON C60 PROFILES.



MIN. INSTALLATION DISTANCE
TO CEILING

STRUCTURAL SOFFIT

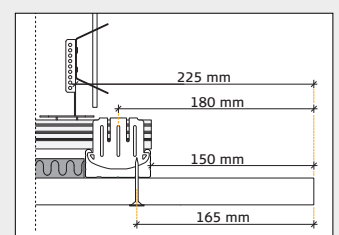
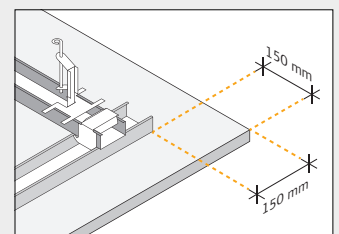
1. Start by calculating the exact size of the cloud. Determine and mark the anchor points for the main profiles based on the cloud size less 225 mm longitudinally and transversely. Install quick-hangers in the four corner anchor points, and distribute the remaining quick-hangers with a max. spacing of 1000 mm. Assemble ring hooks and quick-fit suspension brackets for the desired length, and install them on the ceiling drive anchor before continuing the installation. Drill 6 mm holes in the concrete deck and install the ceiling drive anchor with ring hook and quick-fit suspension bracket by striking the ceiling drive anchor into the hole until it is lodged. Then bend the ring hook into a vertical

position. Alternatively, screw the ring hooks into a steel or wooden base.

2. Hold a main profile (C60 profile) with the opening facing upwards, and click the profile over the quick-fit suspension bracket at every hanger point. Assemble the C60 profiles longitudinally using G-connectors.

3. Then click the installation profiles (C60 profiles) onto the main profiles using the cross connectors.

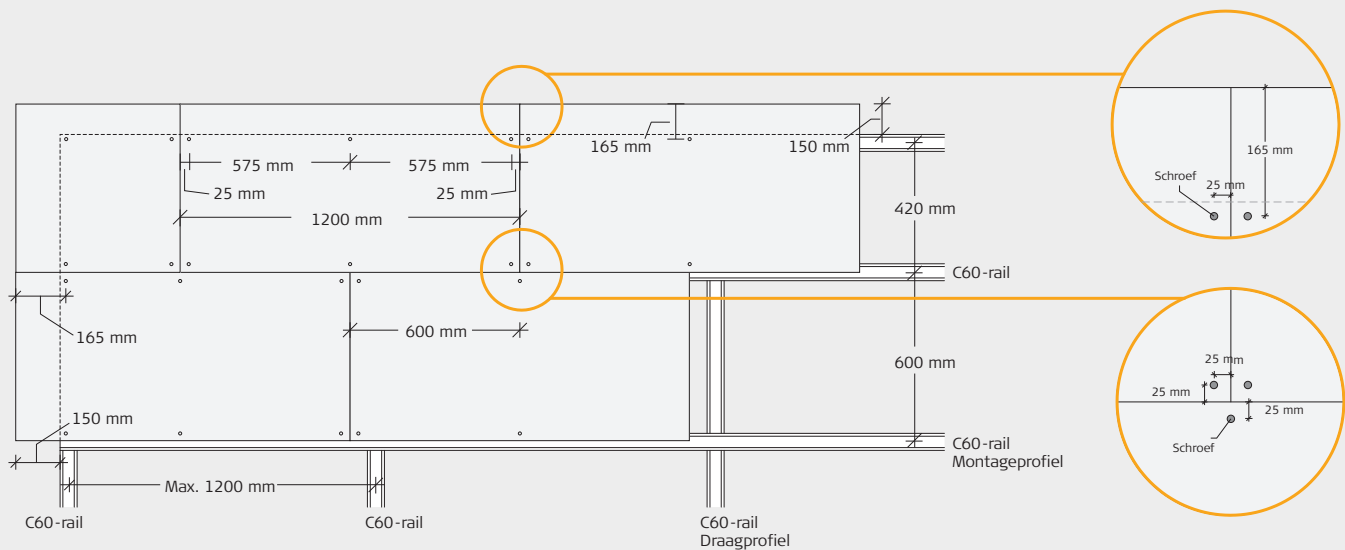
Please note: If the lateral position of the profiles is not entirely precise, you can easily push the profile in the cross connector.



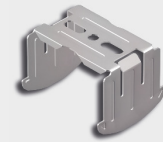
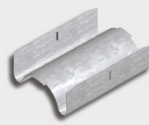
INSTALLATION

1. Start by installing a complete row of Troldtekt Plus panels along the centre line of the cloud. Then continue on both sides. It is important that the panels are installed closely together, and to achieve the optimum aesthetic effect, install the panels in broken bond.

2. Fix the panels using Troldtekt self-tapping screws spaced 165 mm from the edges – as indicated in the figure below. Be careful not to overdrive the screws and so cause an indentation in the panel.



KOMPONENTER



| Product name | C60 profile 60×27 mm | C-connector | C-quick-fit suspension bracket | C-cross connector |
|-------------------------------------|----------------------|-------------|--------------------------------|-------------------|
| Length (mm) | 4000 | 80 | 100 | |
| Quantity per pack | 12 pcs | 100 pcs | 50 pcs | 100 pcs |
| Approx. quantity per m ² | 2.5 per running m | 0.6 pcs | 1.1 pcs | 1.4 pcs |



| Product name | U-profile 28×27 mm | Ring hook | Ceiling drive anchor | Troldtekt structure screw PH2 |
|-------------------------------------|--------------------------|-------------------------------|----------------------|---|
| Length (mm) | 3000 | 120, 250, 375, 500, 750, 1000 | 6.0×40 | 4.2×45 |
| Quantity per pack | 16 pcs | 100 pcs | 100 pcs | 100 pcs |
| Approx. quantity per m ² | According to measurement | 1.1 pcs | 1.1 pcs | Panel length: 600: 4 screws per panel 1200: 6 screws per panel 2400: 10 screws per panel |

PLEASE SEE INSTALLATION INSTRUCTIONS FOR C60 PROFILE SYSTEM FOR INFORMATION ON NONIUS BRACKETS ETC.