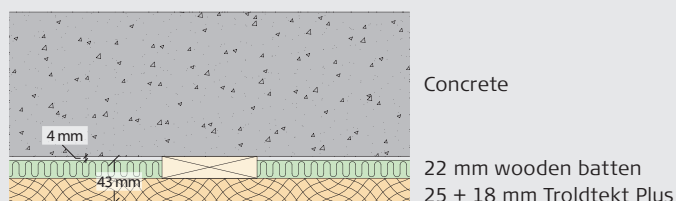


# Troldtekt® Plus

Sound absorption measurements for  
Troldtekt Plus 25 + 18 mm,  
installed on 22 mm wooden battens directly on concrete

## VERTICAL SCHEMATIC DIAGRAM



## SOUND ABSORPTION MEASUREMENTS

Measurement of the sound absorption coefficients were carried out using the reverberation room method - in accordance with DS/ISO 354.

The measurements are carried out by DELTA Acoustics & Vibration A/S.

Hz	100	125	160	200	250	315	400	500	630	800	1000	1250	1600	2000	2500	3150	4000	5000
$\alpha$	0,09	0,10	0,14	0,18	0,27	0,40	0,57	0,75	0,90	1,03	1,00	0,97	0,89	0,82	0,84	0,90	0,92	1,06

$\alpha_w = 0,60$  - NRC = 0,75 - Absorption class C.

