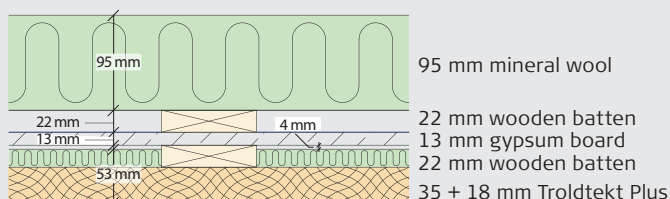


# Troldtekt® Plus

Sound absorption measurements for  
Troldtekt Plus 35 + 18 mm, installed on 22 mm wooden battens,  
13 mm gypsum board, 22 mm wooden battens plus 95 mm mineral wool

## VERTICAL SCHEMATIC DIAGRAM



## SOUND ABSORPTION MEASUREMENTS

Measurement of the sound absorption coefficients were carried out using the reverberation room method - in accordance with DS/ISO 354.

The measurements are carried out by DELTA Acoustics & Vibration A/S.

Hz	100	125	160	200	250	315	400	500	630	800	1000	1250	1600	2000	2500	3150	4000	5000
$\alpha$	0,24	0,27	0,25	0,25	0,31	0,43	0,58	0,83	0,99	1,09	1,09	0,97	0,90	0,90	0,92	1,04	1,09	1,01

$\alpha_w = 0,65$  - NRC = 0,75 - Absorption class C.

